



VORTEX 3

Vortex shaker suitable for short-time operation (touch function), activated by pressing shaker attachment or continuous operation.

- Wide speed range, infinitely adjustable
- Different applications thanks to 3 interchangeable attachments and 7 inserts (e.g. Eppendorf tubes, microtiter plates, Erlenmeyer flasks 250 ml etc.), please order separately
- Attachments securely click onto appliance in any position
- Special strap (VG 3.36, page 51) ensures easy handling of round/Erlenmeyer flasks
- Sturdy metal zinc die cast casing
- Compact design
- Short-time operation activated by pressing attachment (touch function)
- Stable at high speeds thanks to special feet (silicon base with ultra high vibration damping)
- Eccentric with ball bearings
- Suitable for continuous operation with low self heating thanks to self ventilation of motor

Shaking movement: orbital

Orbital diameter: 4 mm

Infinitely adjustable speed range: 500 - 2.500 rpm

Accessories: VG 3.1 Standard attachment, VG 3.2 One-hand attachment, VG 3.21 Rubber mat, VG 3.3 Universal attachment, VG 3.31 Test tube attachment (for VG 3.3), VG 3.32 Test tube attachment (for VG 3.3), VG 3.33 Test tube attachment (for VG 3.3), VG 3.34 Test tube attachment (for VG 3.3), VG 3.35 Test tube attachment (for VG 3.3), VG 3.36 Erlenmeyer flask attachment (for VG 3.3), VG 3.37 Microtiter plate attachment (for VG 3.3)

Technical Data

Type of movement	orbital
Shaker diameter [mm]	4
Motor rating input [W]	58
Motor rating output [W]	10
Permissible ON time [%]	100
Speed min (adjustable) [rpm]	500
Speed range [rpm]	0 - 2500
Speed display	none
Timer	no
Operating mode	continuous operation
Touch function	yes
Shaking table lock	no
Working with microtiter plates	yes
Number of microtiter plates	1
Dimensions (W x H x D) [mm]	127 x 136 x 149
Weight [kg]	4.5
Permissible ambient temperature [°C]	5 - 40
Permissible relative humidity [%]	80
Protection class according to DIN EN 60529	IP 21
RS 232 interface	no
Analog output	no
Voltage [V]	200 - 240 / 115 / 100
Frequency [Hz]	50/60
Power input [W]	60
Ident. No.	0003340000

VG 3.1 Standard attachment

Standard attachment for reagent glasses / small vessels (continuous / touch operation), included with delivery.

Ident. No.
0003341200



VG 3.31 Test tube attachment*

For 54 Eppendorf tubes (continuous operation).

Ident. No.
0003344300



VG 3.2 One-hand attachment

One-hand attachment, 88 mm, round, with rubber insert (continuous / touch operation).

Ident. No.
0003342300



VG 3.32 Test tube attachment*

For 18 reagent glasses, 10 mm (continuous operation).

Ident. No.
0003343900



VG 3.21 Rubber pad

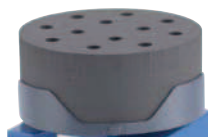
For use with VG 3.2 One-hand attachment.

Ident. No.
0004206500

VG 3.33 Test tube attachment*

For 12 reagent glasses, 12 mm (continuous operation).

Ident. No.
0003344000



VG 3.3 Universal attachment

Universal attachment, 150 mm, with rubber insert (continuous operation).

Ident. No.
0003342400



VG 3.34 Test tube attachment*

For 8 reagent glasses, 16 mm (continuous operation).

Ident. No.
0003344100



VG 3.35 Test tube attachment*

For 8 reagent glasses, 20 mm (continuous operation).

Ident. No.
0003344200



VG 3.36 Erlenmeyer flask attachment*

For 1 Erlenmeyer / round flask from 100 to 250 ml (continuous operation).

Ident. No.
0003342100



VG 3.37 Microtiter plate attachment*

For 1 standard microtiter plate (continuous operation).

Ident. No.
0003344400



* For VG 3.3 Universal attachment